

Figure 1

STEP 1 INSTALLING THE MOUNTING BRACKET

1a) With the LGO Operator not attached, mount the operator bracket with 3 bolts as shown in *Figure 1*. Drilling may be required in certain circumstances. Ensure bracket is as close to door bracket as possible on the mounting plate. Height is determined by bottom of axle cutout being flush in height with the door bracket.

1b) Ensure the spacer plate is in position when installing self tapping screws (x2) through mounting bracket into door bracket *Figure 2*.

Note: Right Hand Operator and Bracket shown, Left Hand Opposite.

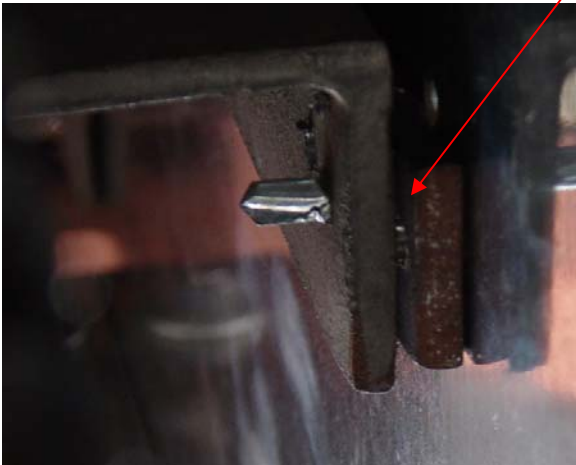


Figure 2



Figure 3

STEP 2 INSTALLING THE LGO OPERATOR

2a) Mount the LGO Operator as shown in *Figure 3*. Make sure the door sprocket is aligned with drive sprocket. Leave mounting bolts finger tight until chain is installed. Carriage bolts should be used with the head toward the door.

2b) Wrap the chain around the door sprocket and then the drive sprocket and join the ends together with the master link. Half link to be used if chain is too slack.

2c) Raise or lower the Operator to attain chain tension. Once chain tension is achieved, bolts should be tightened.

2d) Install power wiring as described in LGO Operator Manual. Care should be taken to route wires where they will not interfere with Operator or door operation.

WARNING

THE FOLLOWING INSTRUCTIONS ARE INTENDED TO BE A GUIDE FOR PROFESSIONAL DOOR INSTALLERS. LACK OF ADEQUATE KNOWLEDGE CAN POSE A THREAT OF SERIOUS INJURY TO THE NONPROFESSIONAL.